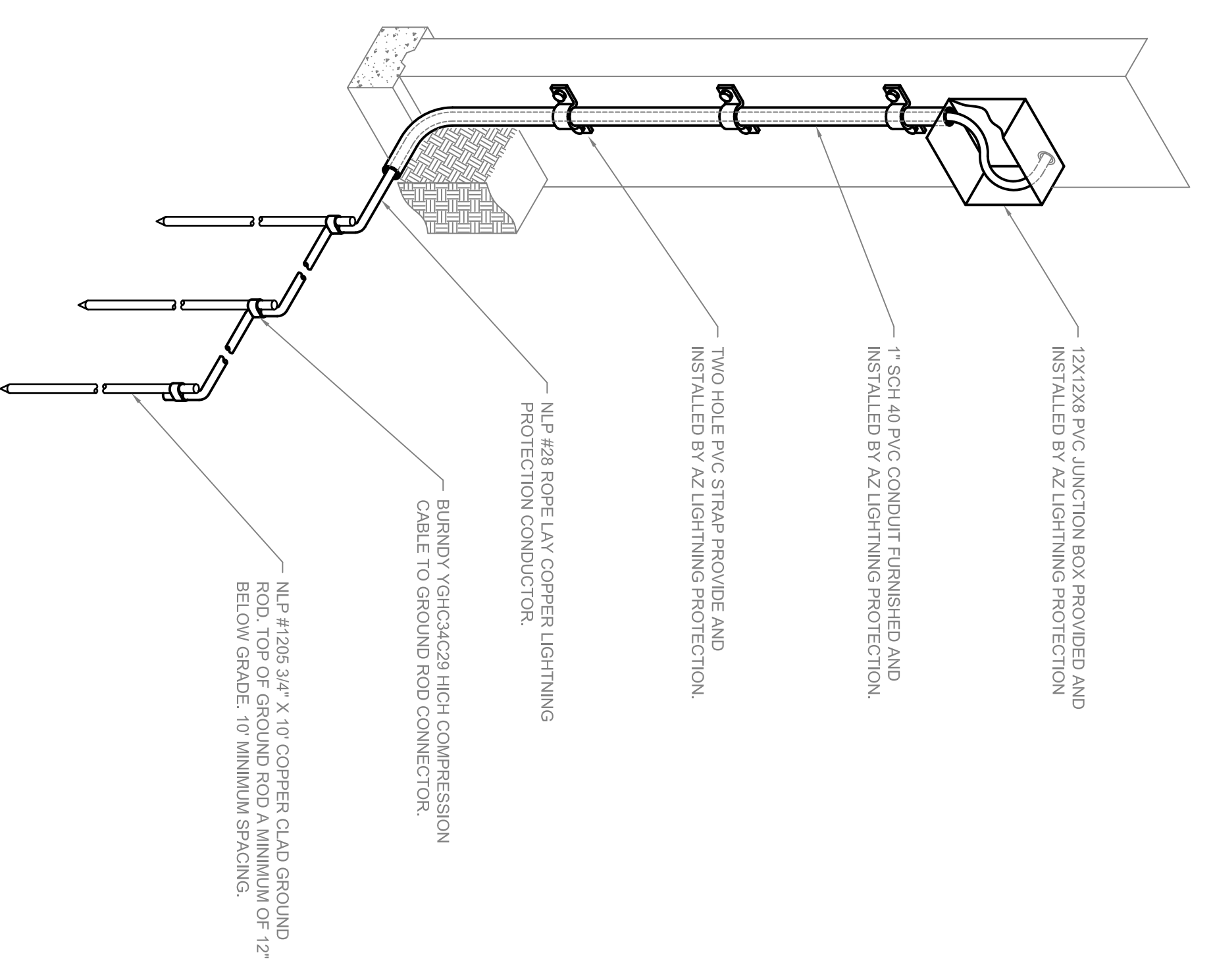
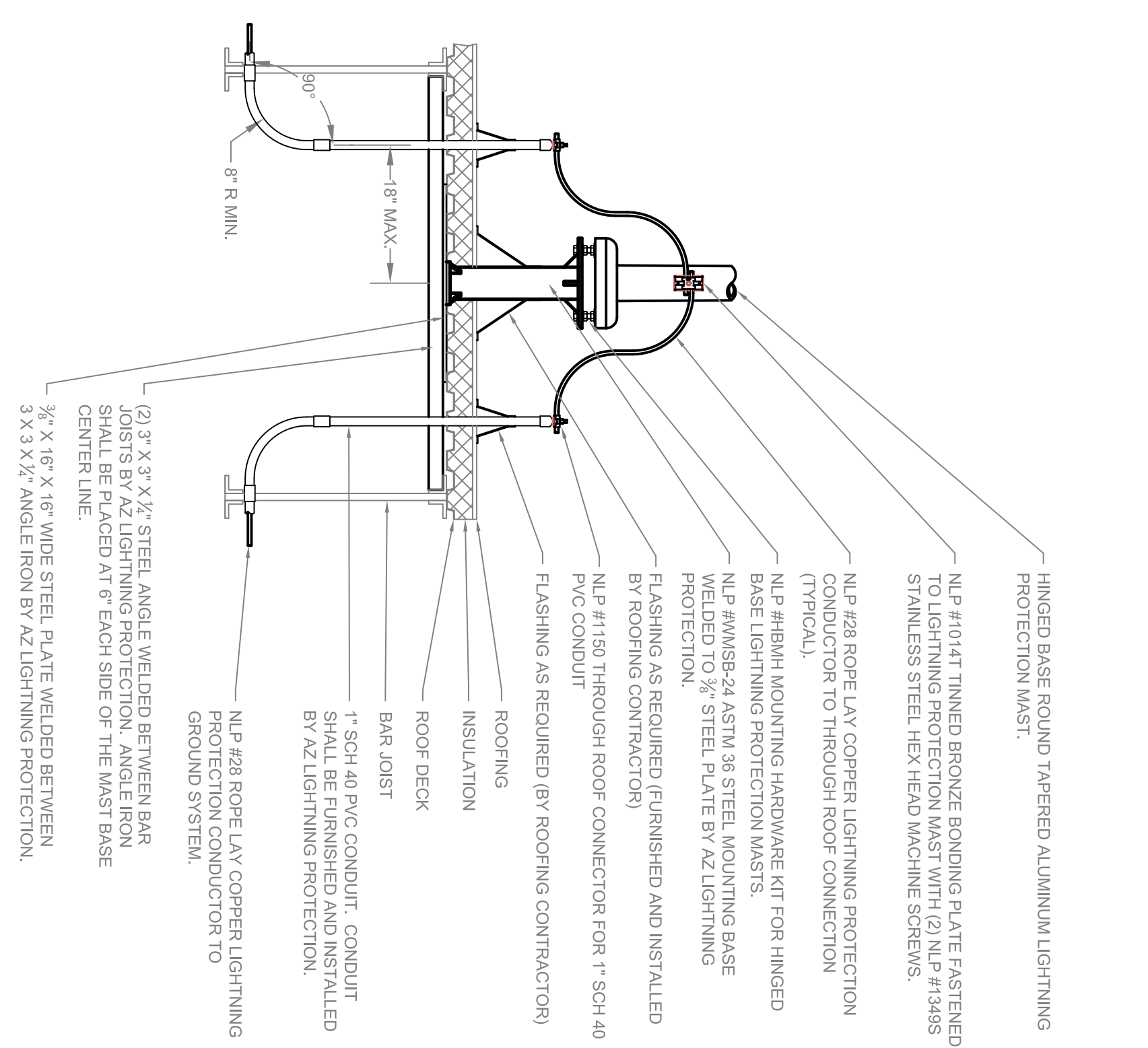
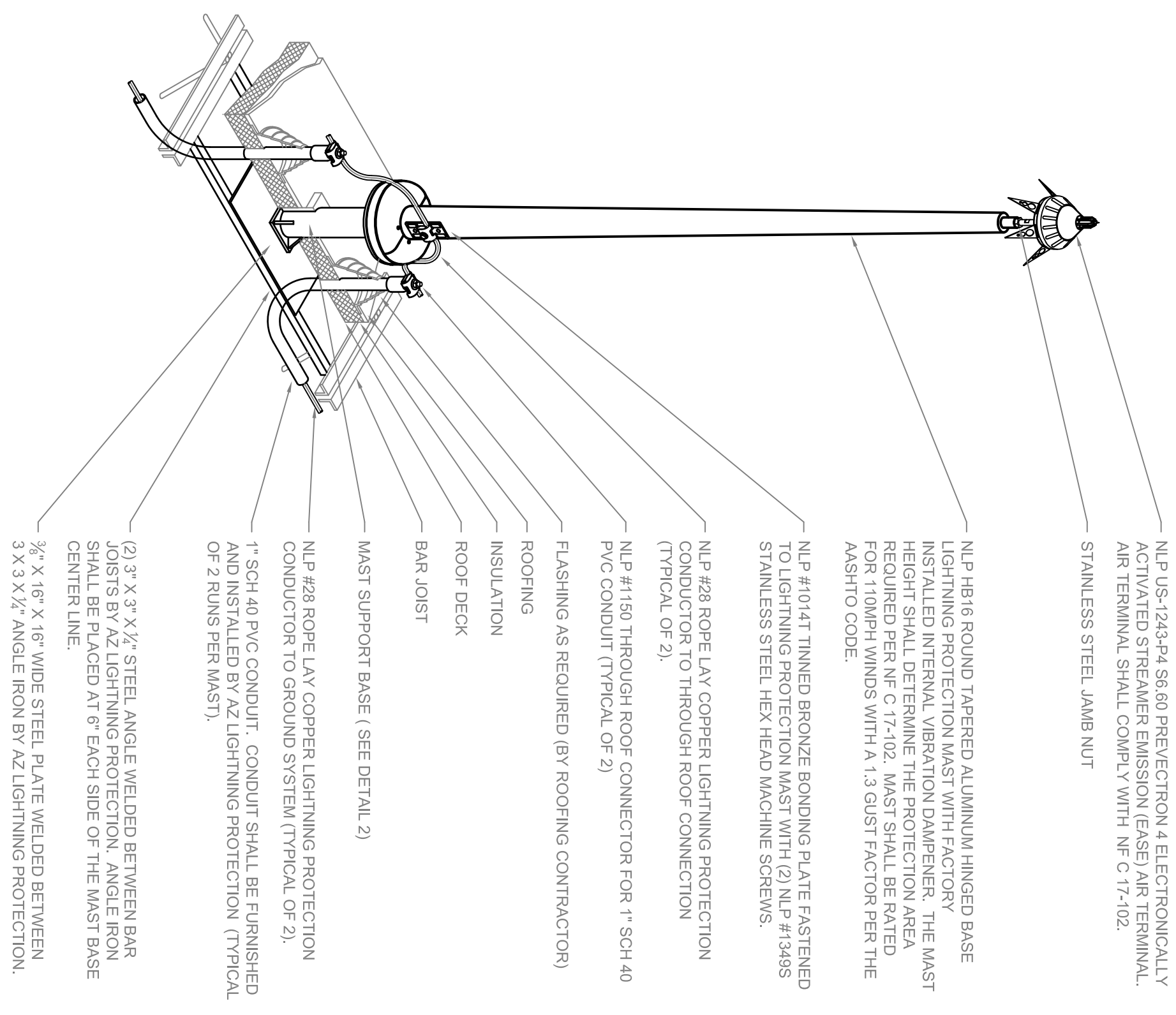
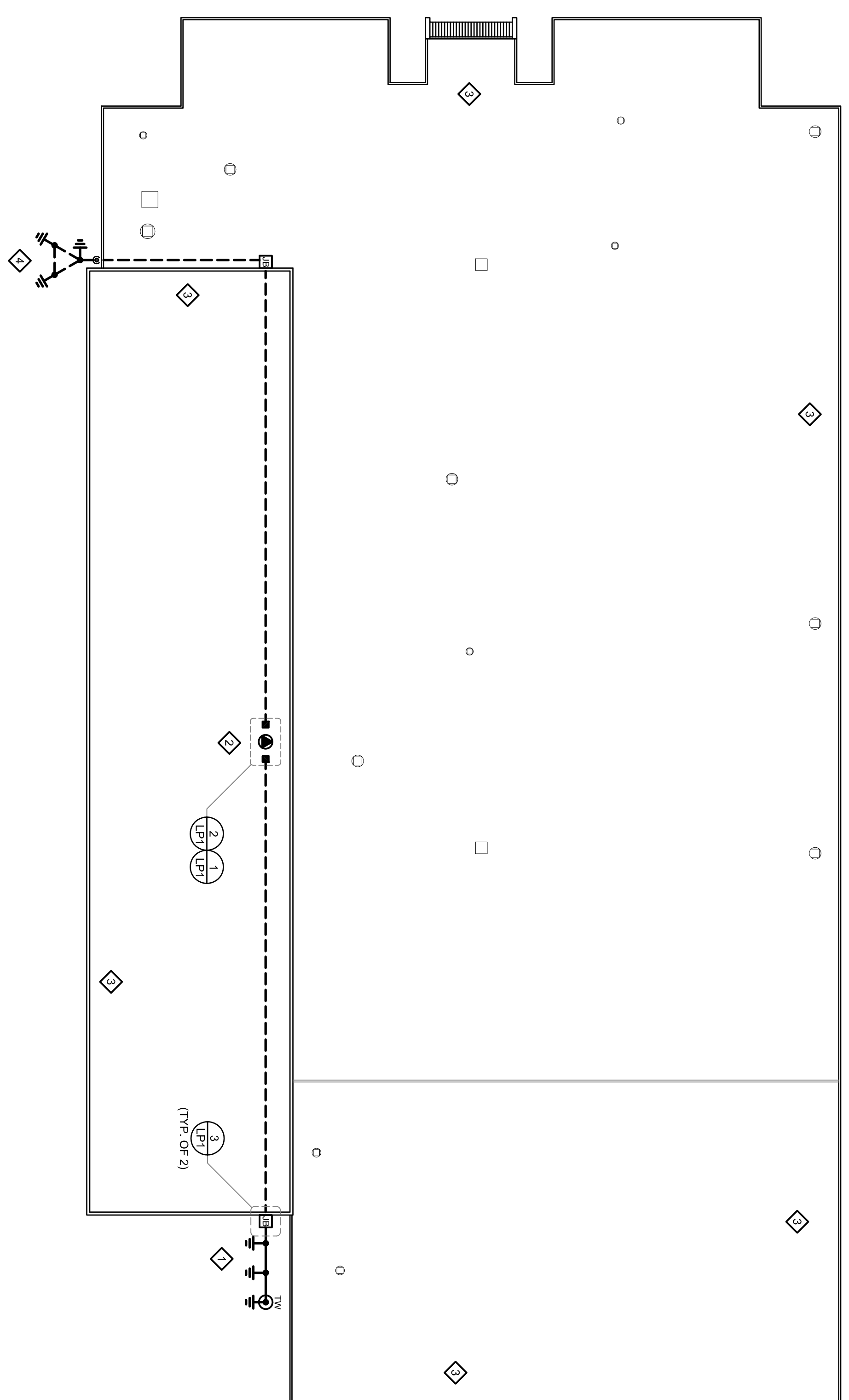


**KEYED NOTES**

- 1 VERIFY LOCATION OF UNDER GROUND SERVICES BEFORE INSTALLING GROUND SYSTEM.
- 2 COORDINATE THE INSTALLATION OF THE LIGHTNING PROTECTION BASE WITH ROOFING CONTRACTOR.
- 3 AZ LIGHTNING PROTECTION IS NOT RESPONSIBLE FOR REMOVING THE EXISTING LIGHTNING PROTECTION.
- 4 CONNECT LIGHTNING PROTECTION DOWNLEAD TO EXISTING GROUND SYSTEM.

**LEGEND**

- S8.60 PREVECTION EASE AIR TERMINAL ON A 16" ALUMINUM HINGED BASE MAST
- 1150 THROUGH ROOF CABLE CONNECTOR
- ⬇ 1205 3/4" X 10' COPPER CLAD GROUND ROD
- ▣ 12 X 12 X 8 PVC JUNCTION BOX
- ⊙ CONDUIT TURNING DOWN
- ⊕ GROUND TEST WELL
- LIGHTNING PROTECTION CONDUCTOR IN 1" PVC CONDUIT



1 LP1 NOT TO SCALE

2 LP1 NOT TO SCALE

3 LP1 NOT TO SCALE