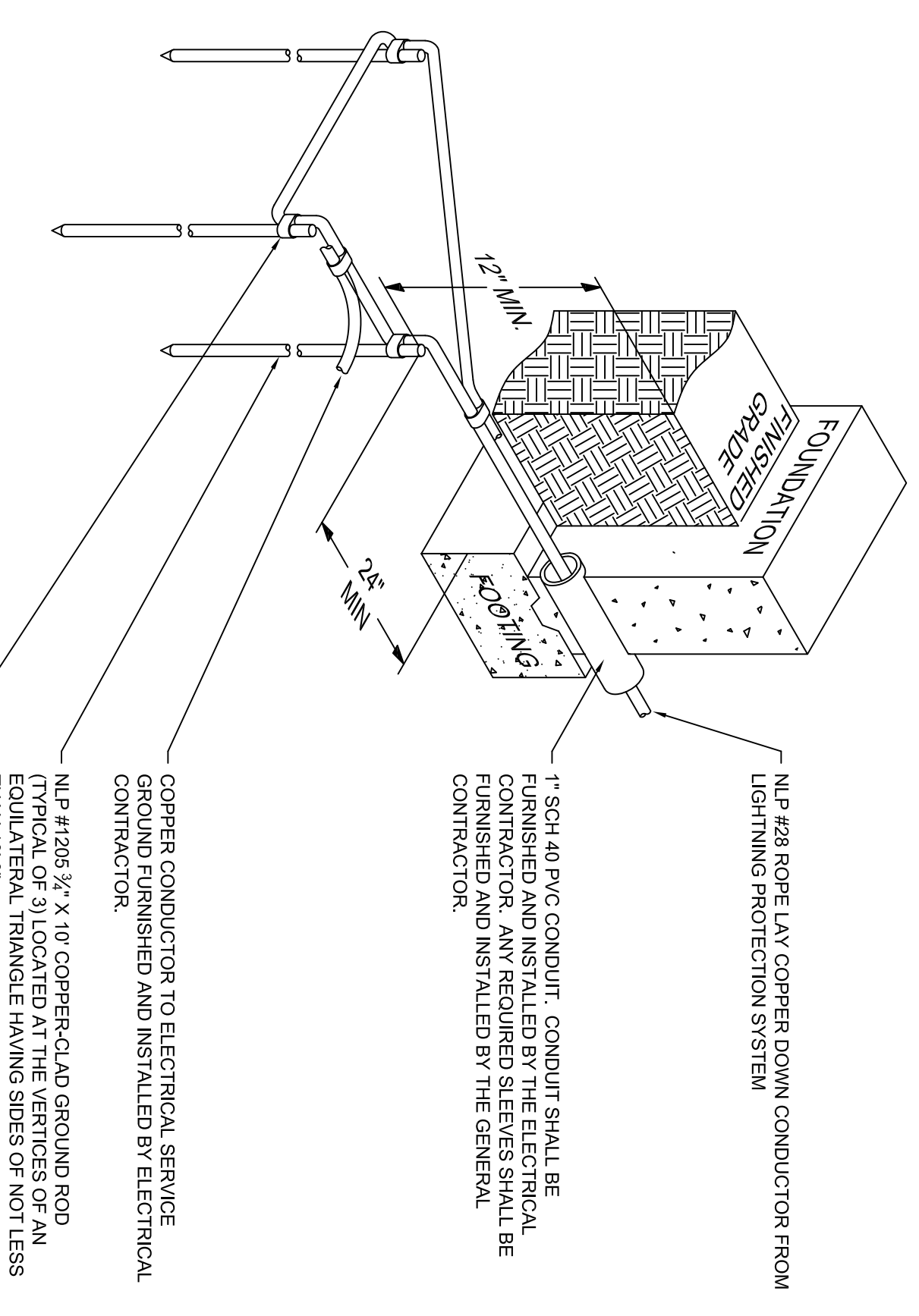
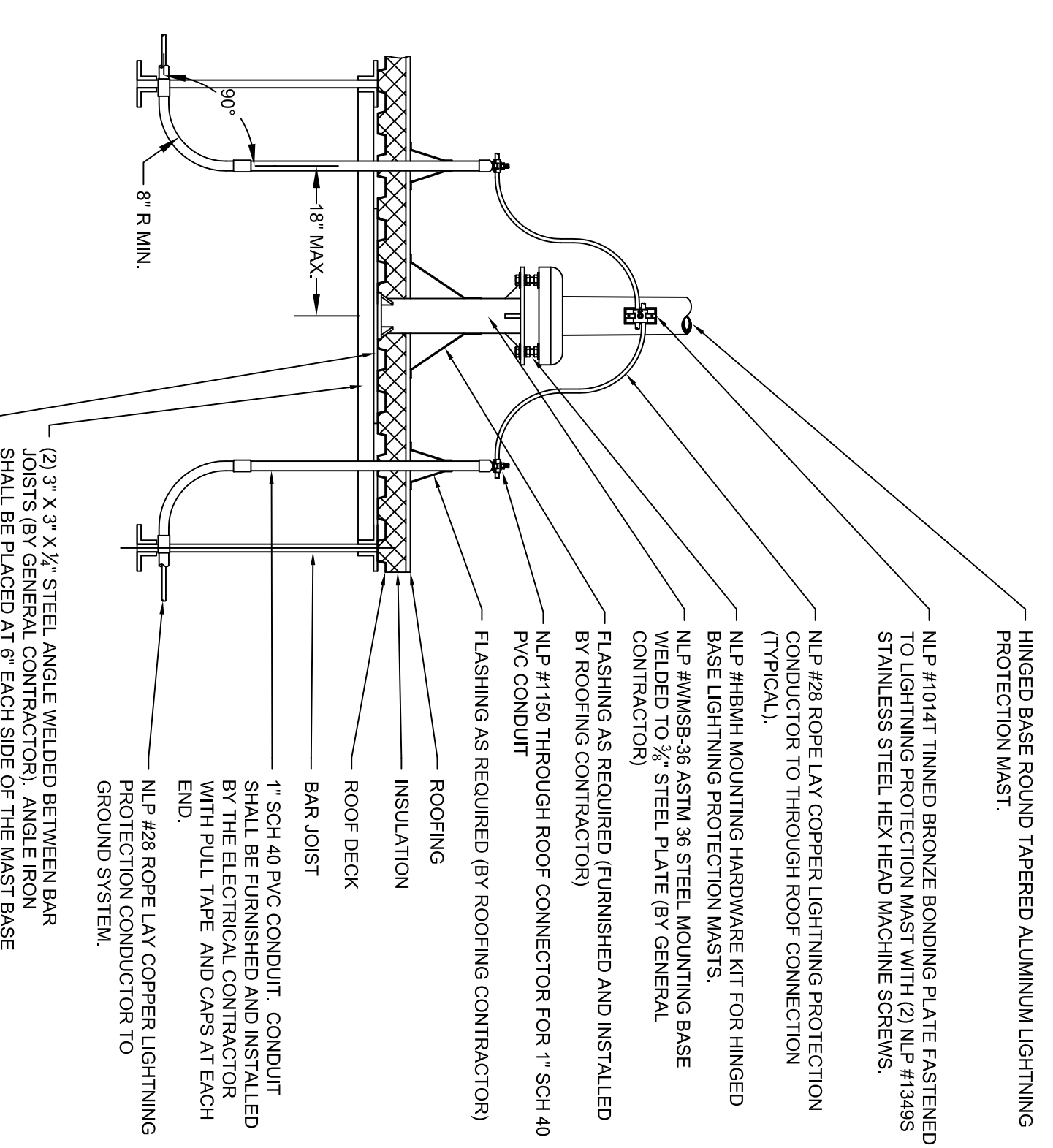
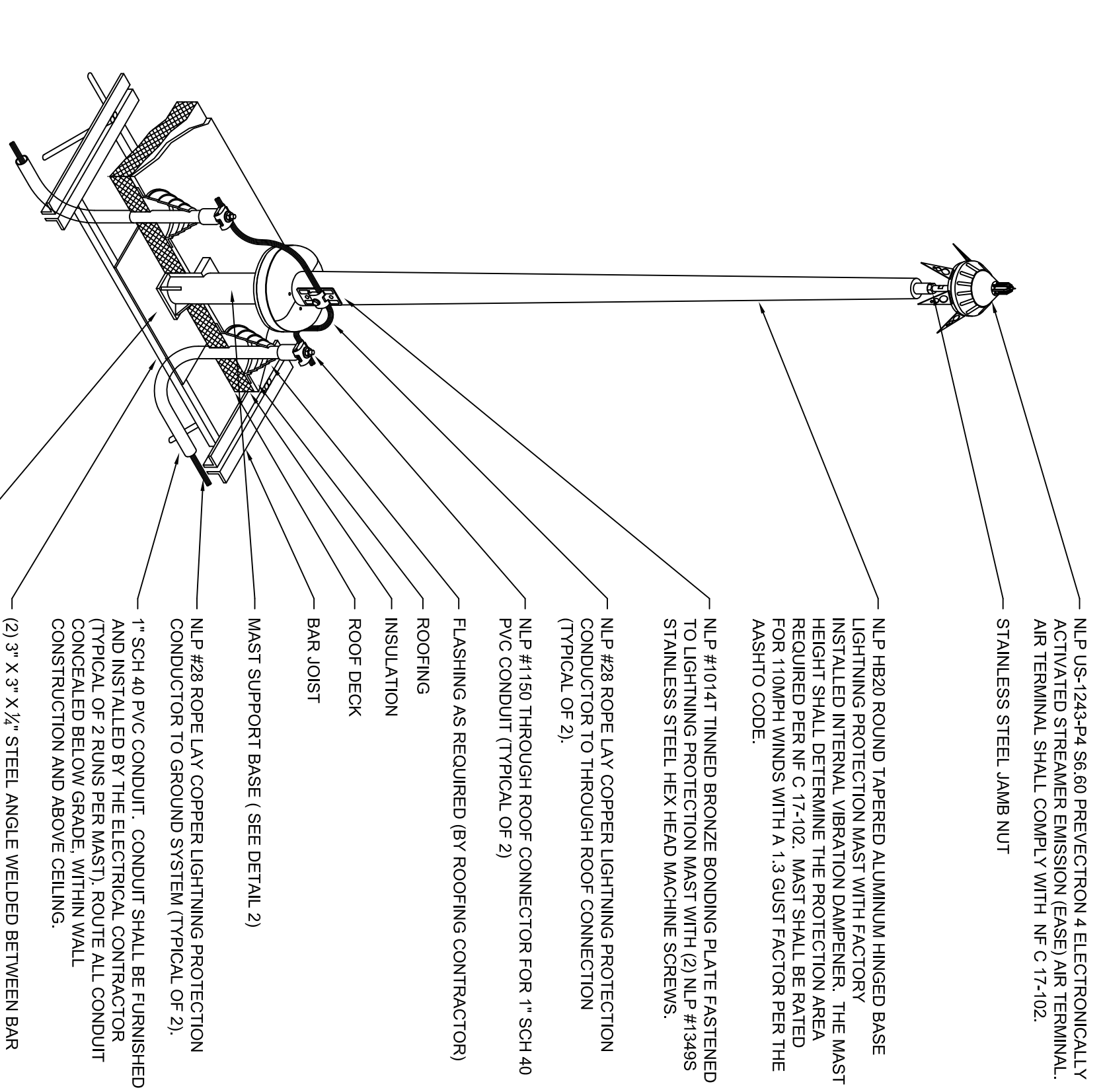
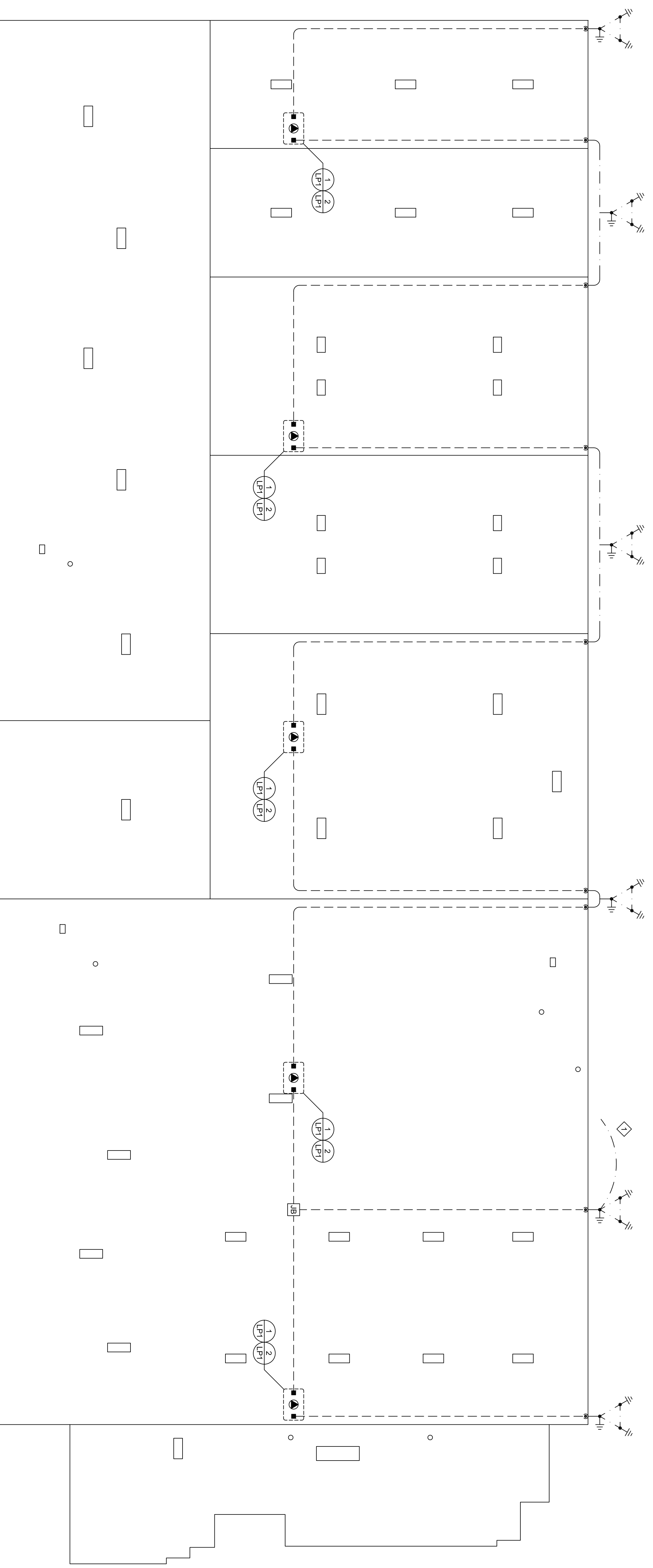


**KEYED NOTES**

◆ ELECTRICAL CONTRACTOR SHALL PROVIDE A PROTECTION SYSTEM TO ONE LIGHTNING PROTECTION GROUND.

**LEGEND**

- ◆ PRE-ELECTRON IV EASE AIR TERMINAL AND MAST
- ◆ THRU ROOF CABLE CONNECTOR
- ◆ CONDUIT TURNING DOWN
- ◆ GROUND ROD
- ◆ LIGHTNING PROTECTION CONDUCTOR IN CONDUIT
- ◆ BASE COPPER LIGHTNING PROTECTION CONDUCTOR



N.P. #108 ROUND TAPERED ALUMINUM HINGED BASE LIGHTNING PROTECTION MAST WITH FACTORY INSTALLED INTERNAL VIBRATION DAMPENER. THE MAST HEIGHT SHALL BE TERMINAL PROTECTION AREA FOR 110MPH WINDS WITH A 1.3 GUST FACTOR PER THE ASHRAO CODE.

N.P. #104 T TINED BRONZE BONDING PLATE FASTENED TO LIGHTNING PROTECTION MAST WITH (2) N.P. #134S STAINLESS STEEL HEX HEAD MACHINE SCREWS.

N.P. #218 ROPE LAY COPPER LIGHTNING PROTECTION CONDUCTOR TO THROUGH ROOF CONNECTION (TYPICAL OF 2)

N.P. #150 THROUGH ROOF CONNECTOR FOR 1" SCH 40 PVC CONDUIT (TYPICAL OF 2)

FLASHING AS REQUIRED (BY ROOFING CONTRACTOR)

ROOFING

INSULATION

ROOF DECK

BAR JOIST

MAST SUPPORT BASE (SEE DETAIL 2)

N.P. #218 ROPE LAY COPPER LIGHTNING PROTECTION CONDUCTOR TO GROUND SYSTEM (TYPICAL OF 2)

1" SCH 40 PVC CONDUIT. CONDUIT SHALL BE FINISHED AND INSTALLED BY THE ELECTRICAL CONTRACTOR (TYPICAL OF 2) FROM PERMANENT ROOF ALL CONDUIT CONSTRUCTION AND ABOVE CEILING.

(2) 3" X 1/2" X 1/2" STEEL ANGLE WELD BETWEEN BAR JOISTS BY GENERAL CONTRACTOR. ANGLE IRON SHALL BE PLACED AT 6" EACH SIDE OF THE MAST BASE CENTER LINE.

**1 LIGHTNING PROTECTION MAST**  
NOT TO SCALE

HINGED BASE ROUND TAPERED ALUMINUM LIGHTNING PROTECTION MAST.

N.P. #104 T TINED BRONZE BONDING PLATE FASTENED TO LIGHTNING PROTECTION MAST WITH (2) N.P. #134S STAINLESS STEEL HEX HEAD MACHINE SCREWS.

N.P. #218 ROPE LAY COPPER LIGHTNING PROTECTION CONDUCTOR TO THROUGH ROOF CONNECTION (TYPICAL)

N.P. #134H KOLNUNG HARDWARE KIT FOR HINGED BASE LIGHTNING PROTECTION MASTS.

WELDED TO 3/8" AS PER STEEL WORKING BASE CONTRACTOR. STEEL SHALL BE GENERAL CONTRACTOR.

FLASHING AS REQUIRED (BY ROOFING CONTRACTOR)

FLASHING AS REQUIRED (BY ROOFING CONTRACTOR)

PVC CONDUIT

ROOFING

INSULATION

ROOF DECK

BAR JOIST

1" SCH 40 PVC CONDUIT. CONDUIT SHALL BE FINISHED AND INSTALLED BY THE ELECTRICAL CONTRACTOR AT EACH END.

N.P. #218 ROPE LAY COPPER LIGHTNING PROTECTION CONDUCTOR TO GROUND SYSTEM.

(2) 3" X 1/2" X 1/2" STEEL ANGLE WELD BETWEEN BAR JOISTS BY GENERAL CONTRACTOR. ANGLE IRON SHALL BE PLACED AT 6" EACH SIDE OF THE MAST BASE CENTER LINE.

**2 LIGHTNING PROTECTION BASE**  
NOT TO SCALE

N.P. #218 ROPE LAY COPPER DOWN CONDUCTOR FROM LIGHTNING PROTECTION SYSTEM.

1" SCH 40 PVC CONDUIT. CONDUIT SHALL BE FINISHED AND INSTALLED BY THE ELECTRICAL CONTRACTOR. ANY REQUIRED SLEEVES SHALL BE INSTALLED BY THE GENERAL CONTRACTOR.

N.P. #120S 3/4" X 1/8" COPPER-CLAD GROUND ROD (TYPICAL OF 3) LOCATED AT THE VERTICES OF AN 11' X 11' SQUARE HAVING SIDES OF NOT LESS THAN 1/2" THICKNESS.

COPPER CONDUCTOR TO ELECTRICAL SERVICE GROUND SYSTEM.

1" SCH 40 PVC CONDUIT. CONDUIT SHALL BE FINISHED AND INSTALLED BY THE ELECTRICAL CONTRACTOR.

1" SCH 40 PVC CONDUIT. CONDUIT SHALL BE FINISHED AND INSTALLED BY THE ELECTRICAL CONTRACTOR.

1" SCH 40 PVC CONDUIT. CONDUIT SHALL BE FINISHED AND INSTALLED BY THE ELECTRICAL CONTRACTOR.

1" SCH 40 PVC CONDUIT. CONDUIT SHALL BE FINISHED AND INSTALLED BY THE ELECTRICAL CONTRACTOR.

1" SCH 40 PVC CONDUIT. CONDUIT SHALL BE FINISHED AND INSTALLED BY THE ELECTRICAL CONTRACTOR.

1" SCH 40 PVC CONDUIT. CONDUIT SHALL BE FINISHED AND INSTALLED BY THE ELECTRICAL CONTRACTOR.

1" SCH 40 PVC CONDUIT. CONDUIT SHALL BE FINISHED AND INSTALLED BY THE ELECTRICAL CONTRACTOR.

1" SCH 40 PVC CONDUIT. CONDUIT SHALL BE FINISHED AND INSTALLED BY THE ELECTRICAL CONTRACTOR.

1" SCH 40 PVC CONDUIT. CONDUIT SHALL BE FINISHED AND INSTALLED BY THE ELECTRICAL CONTRACTOR.

**3 LIGHTNING PROTECTION GROUND**  
NOT TO SCALE

**LIGHTNING PROTECTION PLAN AND DETAILS**  
PROJECT: **MCKESSON WAREHOUSE**  
**OLIVE BRANCH, MISSISSIPPI**

|                     |
|---------------------|
| DATE: _____         |
| SCALE: _____        |
| DESIGNED BY: _____  |
| DRAWN BY: _____     |
| CHECKED BY: _____   |
| APPROVED BY: _____  |
| SHEET NUMBER: _____ |
| TOTAL SHEETS: _____ |
| DATE: _____         |